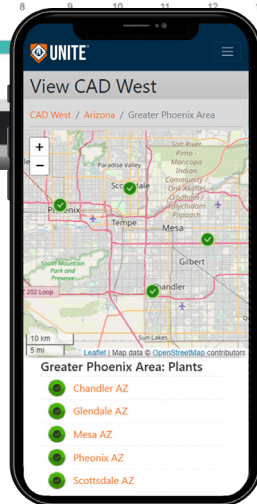
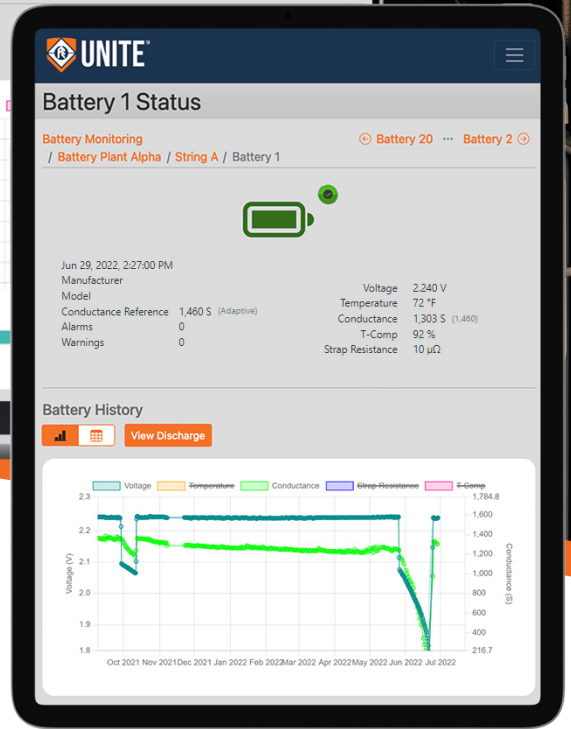
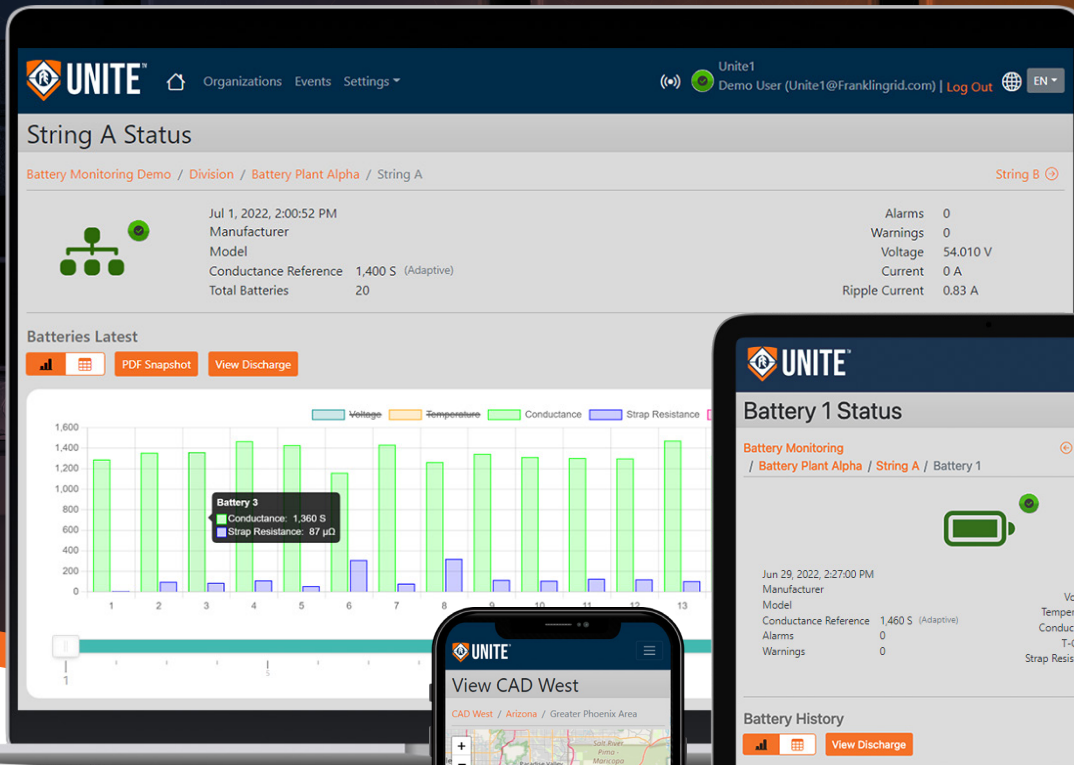




**Franklin Electric**  
GRID SOLUTIONS



**UNITE™**

# BATTERY ASSET MANAGEMENT DATABASE

FOR BATTERY TESTERS & BATTERY MONITORING SYSTEMS



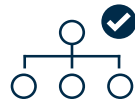
# BATTERY ASSET MANAGEMENT DATABASE

UNITE™ is a sophisticated IoT database that features advanced data visualization tools for Franklin Electric handheld battery testers and battery monitoring systems. UNITE™ provides centralized data storage for an entire network of battery plants, enabling remote analysis and reporting from a centralized location.



## ENHANCED DATA VISUALIZATION TOOLS

UNITE™ presents detailed views of all key performance indicators for each plant, string, and individual battery within your network. Various battery attributes (including voltage, temperature, conductance, strap resistance, and temperature-compensated conductance) can be selected and compared among batteries within the string for quick visualization of performance trends.



## STATUS AT A GLANCE

Quickly review the status of your entire network with green (normal), yellow (warning), and red (alarm) status indicators at the plant, string, and individual battery level. Each alarm or warning status provides a direct link to a list of events for quick targeting and diagnosis of the problem area.



## REALTIME BATTERY DIAGNOSTICS

At the individual battery level, UNITE™ provides a realtime diagnostic snapshot of all key battery health indicators. Additionally, a historical timeline of all previous readings is displayed, allowing you to dive into any point in time to review details.



## DISCHARGE EVENT ANALYSIS

When paired with a CELLGUARD™ Battery Monitoring System, UNITE™ provides a graphical timeline view of every string discharge event, including duration, voltage, temperature, and current data for advanced performance analysis and NERC compliance reporting.



## DATA SECURITY

Hosted on the Microsoft® Azure cloud, UNITE™ features state-of-the-art, multi-layered platform security and multi-factor authentication user login. Customizable, admin-defined user roles can be granted, giving tiered levels of access to varying roles within your organization.



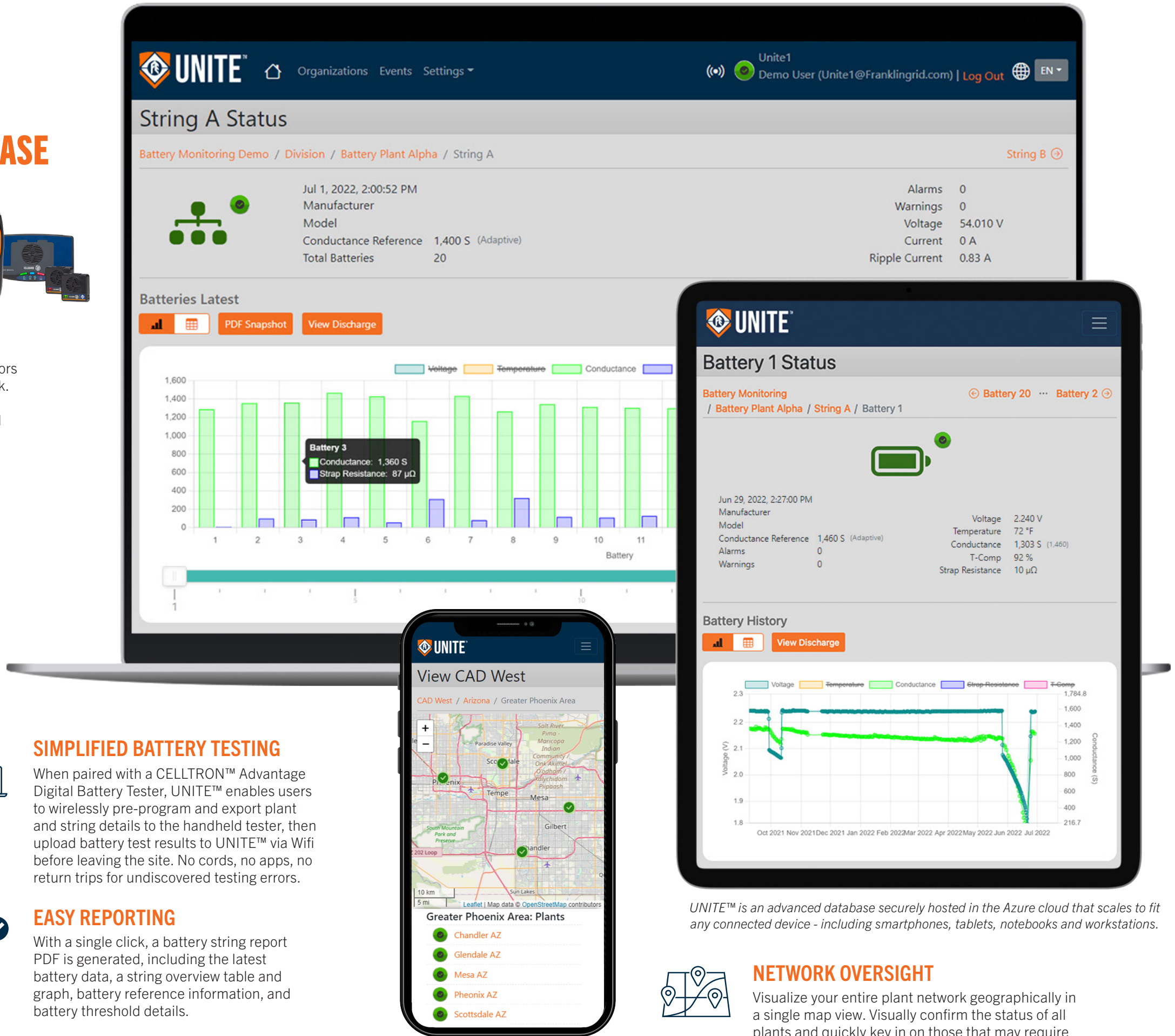
## SIMPLIFIED BATTERY TESTING

When paired with a CELLTRON™ Advantage Digital Battery Tester, UNITE™ enables users to wirelessly pre-program and export plant and string details to the handheld tester, then upload battery test results to UNITE™ via Wifi before leaving the site. No cords, no apps, no return trips for undiscovered testing errors.



## EASY REPORTING

With a single click, a battery string report PDF is generated, including the latest battery data, a string overview table and graph, battery reference information, and battery threshold details.



UNITE™ is an advanced database securely hosted in the Azure cloud that scales to fit any connected device - including smartphones, tablets, notebooks and workstations.



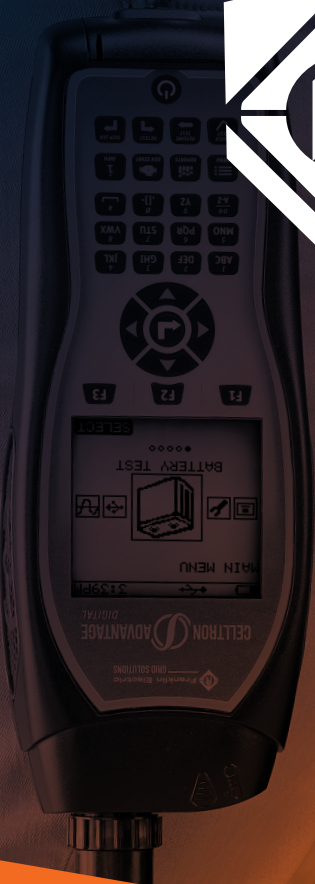
## NETWORK OVERSIGHT

Visualize your entire plant network geographically in a single map view. Visually confirm the status of all plants and quickly key in on those that may require attention or maintenance.





# UNITE™



**Franklin Electric**  
GRID SOLUTIONS